



ALBUQUERQUE VAULT COMPANY

PRE-CAST
CONCRETE
PRODUCTS

300 Airport Dr., NW * Albuquerque, NM 87121 * Phone: 505-836-4404 / Fax: 505-836-5663

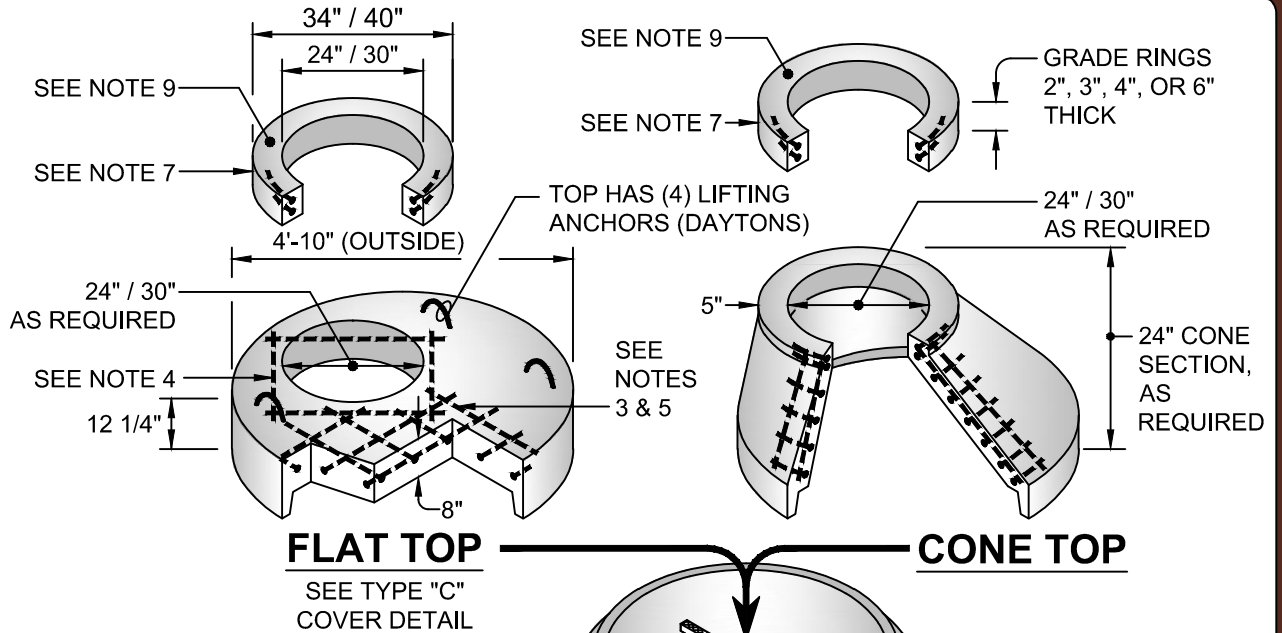
Detail #

MH-4

Not To Scale

Dec., 2012

4' DIAMETER MANHOLE



FLAT TOP

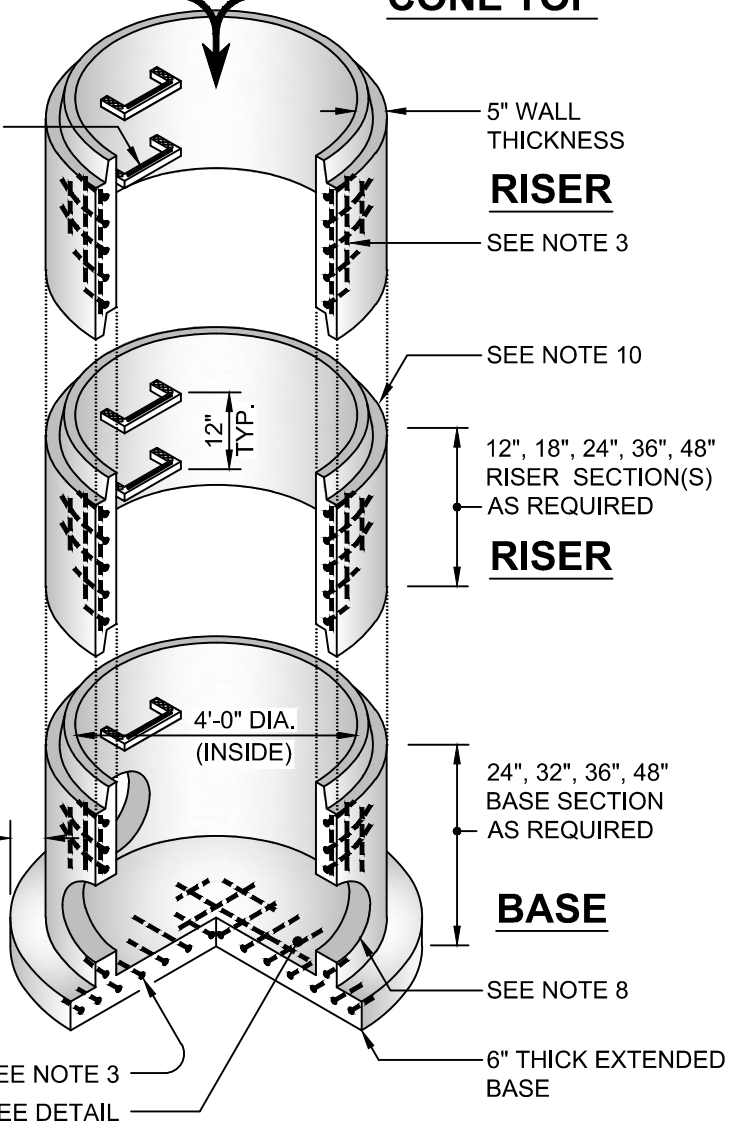
SEE TYPE "C"
COVER DETAIL

CONE TOP

GENERAL NOTES:

1. Manhole design specifications conform to latest ASTM C478 specifications for "Precast Reinforced Concrete Manhole Sections" and NMDOT or C.O.A.
2. Concrete compressive strength 4,000 psi minimum.
3. Steel reinforcing designed to conform to the requirements of ASTM C478 or per C.O.E. conforming to the requirements of ASTM A615 or WWF conforming to the requirements of ASTM A185 or drawn wire conforming to the requirements of ASTM A82 or a combination thereof.
4. Additional reinforcing at all openings.
5. Designed for H-20 loading.
6. Steps shall be steel reinforced copolymer polypropylene and meet the requirements of ASTM C478. See typical step detail.
7. Contractor to adjust to grade as required. 2", 3", 4" & 6" grade rings to be supplied by Albuquerque Vault Co. or to be field adjusted, using approved methods, by contractor.
8. Pipe penetration to be per job requirements. Pipe to be installed by contractor. See typical manhole pipe connection detail.
9. Cast iron ring and cover to be per specifications & supplied by customer.
10. Joints to be sealed with preformed butyl rubber joint sealant meeting requirements of ASTM C990. See typical manhole section joint detail.

SEE NOTE 6



RISER

SEE NOTE 3

SEE NOTE 10

12", 18", 24", 36", 48"
RISER SECTION(S)
AS REQUIRED

RISER

24", 32", 36", 48"
BASE SECTION
AS REQUIRED

BASE

SEE NOTE 8

6" THICK EXTENDED
BASE

OPTIONAL PRECAST INVERT SEE DETAIL